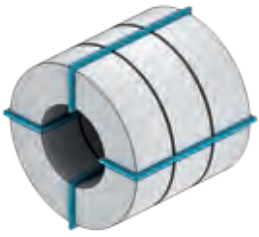


## Standard packaging

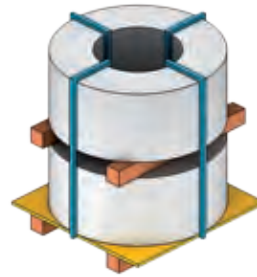
Beispiele der Standardverpackungen



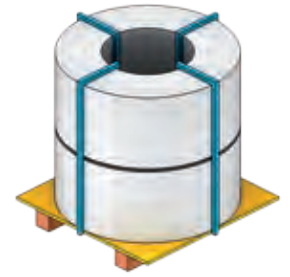
BN1 / C



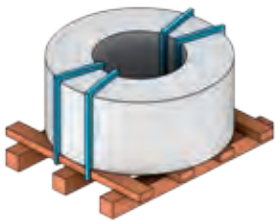
BN2 / C / M



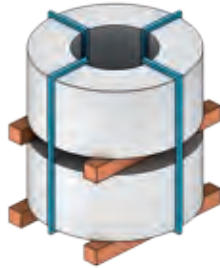
BN3 / 1-2-3-4-5-6



BN4 / 1-2-3



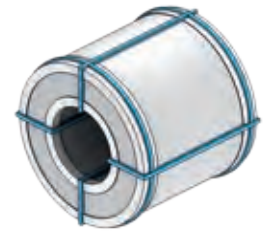
BN6 / 1-2-3-4-5



BN7 / 1-2-3-4-5-6



BN8 / 1-2-3



BN1M

|  | BN1 | BN2 | BN3 | BN4 | BN6 | BN7 | BN8 |
|--|-----|-----|-----|-----|-----|-----|-----|
| Eye-to-side<br><i>Mulde auf der Horizontalachse</i>                                    | ●   |     |     |     |     |     |     |
| Eye-to-side cradle<br><i>Sattel auf der Horizontalachse</i>                            |     | ●   |     |     |     |     |     |
| Eye-to-sky pallet<br><i>Palette mit Füßen und Brettern</i>                             |     |     | ●   | ●   |     |     |     |
| Wood pieces<br><i>Verpackung auf zwei Hölzern</i>                                      |     |     |     |     |     | ●   | ●   |
| Pallet 8x8<br><i>Palette 8x8</i>   |     |     |     |     | ●   |     |     |
| 20-mm spacers<br><i>20 mm Abstandhalter</i>  |     |     | (1) |     | (1) | (1) |     |
| 40-mm spacers<br><i>40 mm Abstandhalter</i>  |     |     | (2) |     | (2) | (2) |     |
| 80-mm spacers<br><i>80 mm Abstandhalter</i>  |     |     | (3) |     |     | (3) |     |
| Plastic protection for wood pieces<br><i>Plastik auf Hölzern</i>                       |     |     | (4) | (1) | (3) | (4) | (1) |
| Plastic film<br><i>Kunststoffolie</i>  |     |     | (5) | (2) | (4) | (5) | (2) |
| Bitumen<br>and poly-coated paper<br><i>Teerpapier und<br/>polybeschichtetes Papier</i> | (C) | (C) | (6) | (3) | (5) | (6) | (3) |
| Metal box<br><i>Metallkiste</i>  | (M) | (M) |     |     |     |     |     |

NON-STANDARD  
PACKAGING  
IS DEVELOPED  
ACCORDING TO  
CUSTOMER REQUEST

*SPEZIFISCHE  
VERPACKUNGEN  
KÖNNEN IN  
ABSTIMMUNG  
MIT DEN KUNDEN  
ENTWICKELT UND  
GELIEFERT WERDEN*

